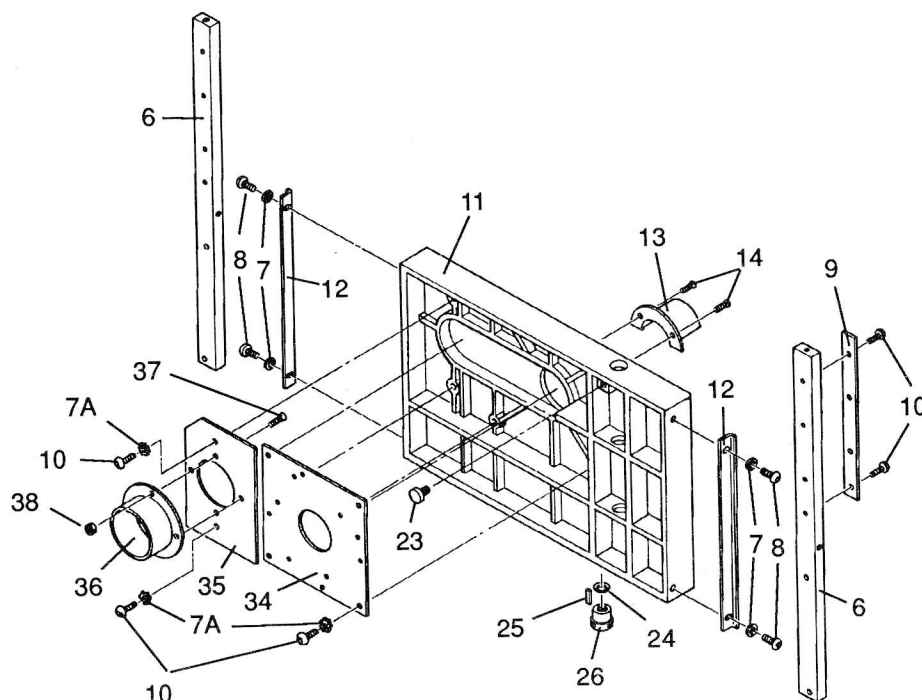


BACK VIEW OF THE JOINT-MATIC SLIDE



PARTS LIST

Ref. No.	Part. No.	Description	Qty.	Ref. No.	Part. No.	Description	Qty.
1	515837	Joint-Matic Base	1	27	515852	Slide sleeve	1
2	515959	Label	1	28	516248	Rollpin	1
3	not used			29	516209	Crank	1
4	515929	Slot extrusion	1	30	514202	Crank assembly decal	1
5	516043	Cap screw, socket head 8-32 x 1/2"	6	31	513994-02	Setscrew, oval pt., #10-24 x 1/4"	1
6	516182	Guide	2	32	513374	Crank knob	1
7	502930	Lock washer	4	33	513373	Knob shaft	1
7A*	515997	Split lock washer	12	34	515878	Router plate	1
8	516273	Cap screw, socket button head, 1/4"-20 x 3/4"	6	35	516176	Dust collection plate	1
9	515843	Scale	1	36	514872	Flange	1
10*	514393	Cap screw, button head,	12	37*	515999	Cap screw, socket head, 10-32 x 1/2"	4
11	515840	Slide	1	38*	515897	Nut, 10-32	4
12	516170	Rail	2	39	515980	Stand base <i>35.43</i>	1
13	515892	Guard	1	40*	513434	Flat washer	3
14	515131	Screw	2	41*	513627	Screw, 3/8 16	3
15	516183	Header bar	1	42*	120382	Split lock washer	3
16	515958	Warning label	1	43*	120377	Hex nut	3
17	515851	Slide screw	1	44	515206	Leg <i>14.62</i>	4
18	515846	Washer, 1/2" nylon	1	-	516083	Hardware Pack	1
19	515847	Washer, 3/8" nylon	1	45	503822	. Truss head screw	16
20	120377	Hex nut, 3/8-16	1	46	115546	. Lock washer	16
21	124829	Jam hex nut	1	47	120372	. Square nut	16
22	516208	Adjuster nut	1	48	120377	. Hex nut, 3/8-16	8
23	515859	Knob	1	49	515230	. Foot	4
24	516210	Spring washer	1	-	513686-03	. Hex nut, 5/32"	1
25	516211	Gib	1	-	513686-05	. Hex nut, 3/32"	1
26	515844	Bushing nut	1	-	513686-07	. Hex nut, 1/8"	1

* Included in Hardware Pack (P/N 516214) * *8.08*