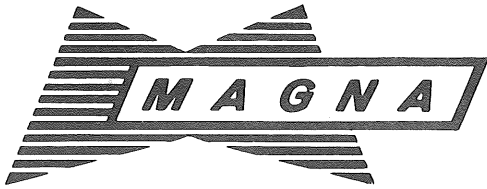


Item No. 500003

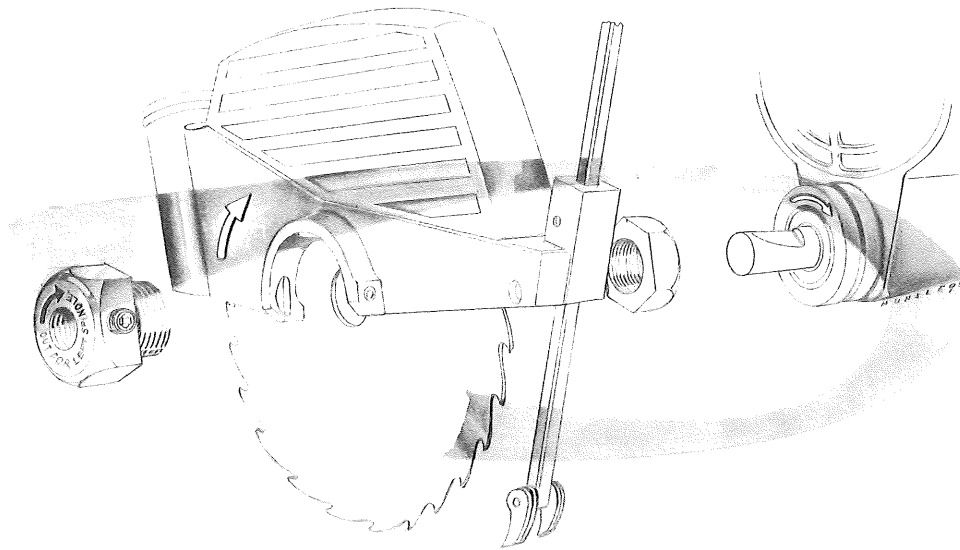
Article No. 84-2265

(For Models 500003 & 500004)



SAWSMITH SPARE PARTS LIST

IMPORTANT INSTRUCTIONS



FOLLOW THE ARROWS

It is most important that the above illustration be studied prior to the assembly of the saw blade and arbor or the assembly of the arbor on the spindle shaft. The arrow on the saw blade, 1-1/4" arbor, and saw guard should always point in the direction of rotation.

When placing the 1-1/4" arbor on a saw blade, always keep the unprinted side of the saw blade on the nut side of the arbor. A good procedure for assembly is to lay the arbor on a flat surface with the threads up, lower the saw blade over the arbor, with the blade teeth pointing

toward you on the left side, and start the nut on the arbor. Following this procedure will assure proper assembly of the saw blade and arbor.

To assure proper assembly of the arbor on the spindle, the following procedure should be used. When placing the arbor on the left spindle end, the arbor setscrew should be between the blade and the end of the shaft. When placing the arbor on the right spindle end, the arbor set screw should be between the blade and the cradle casting.

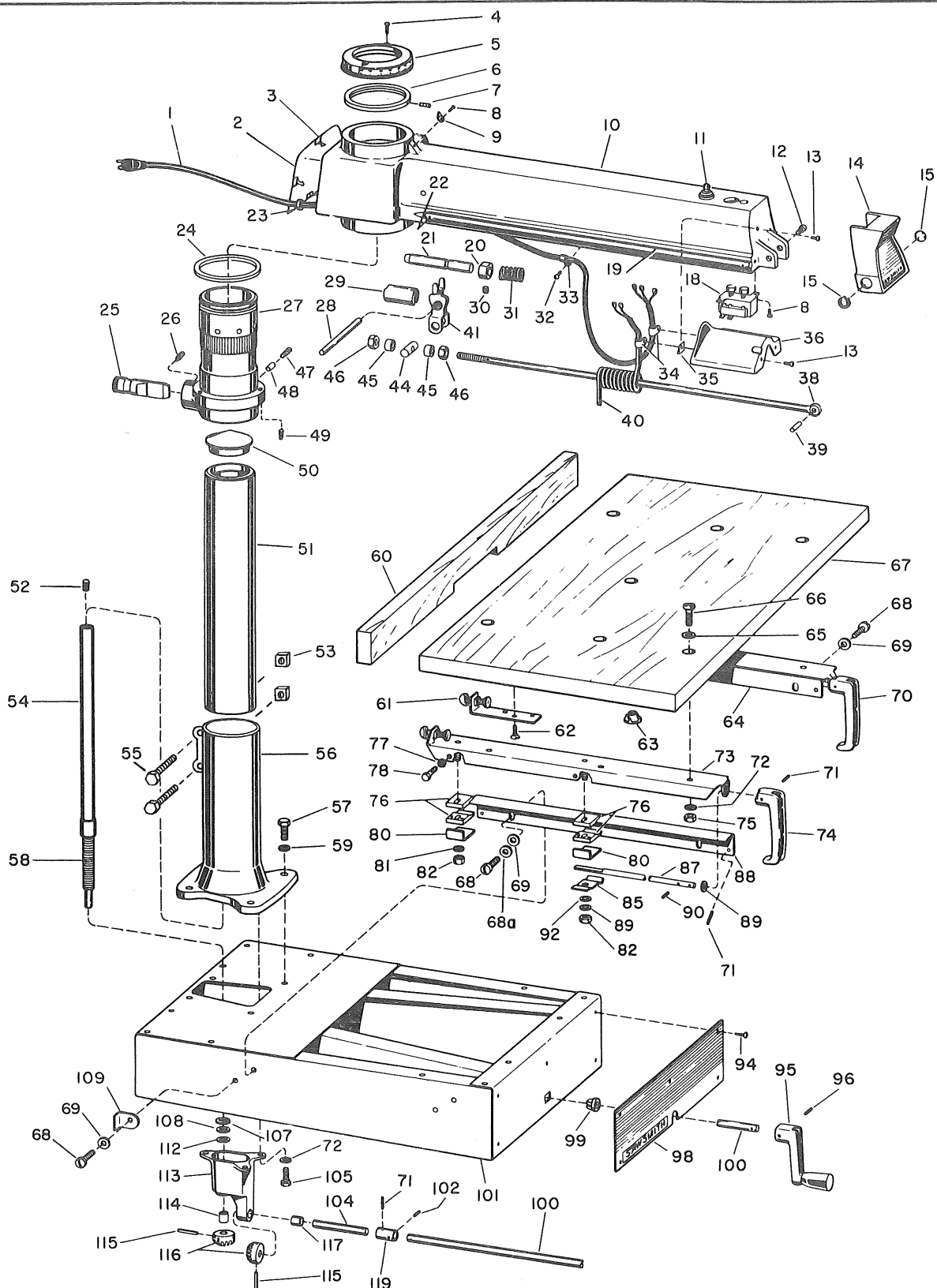
SERVICE

Your SAWSMITH carries a one-year warranty against defective materials or workmanship, provided you signed and returned the warranty card that came with your machine. Should you have occasion for repair or replacement of a part under warranty, contact your SAWSMITH dealer. He has current repair information and part prices.

Many SAWSMITH dealers maintain a stock of replacement parts and can give excellent mechanical service.

If an individual part is not included in the parts list, or shown on the exploded drawing, it is not sold separately.

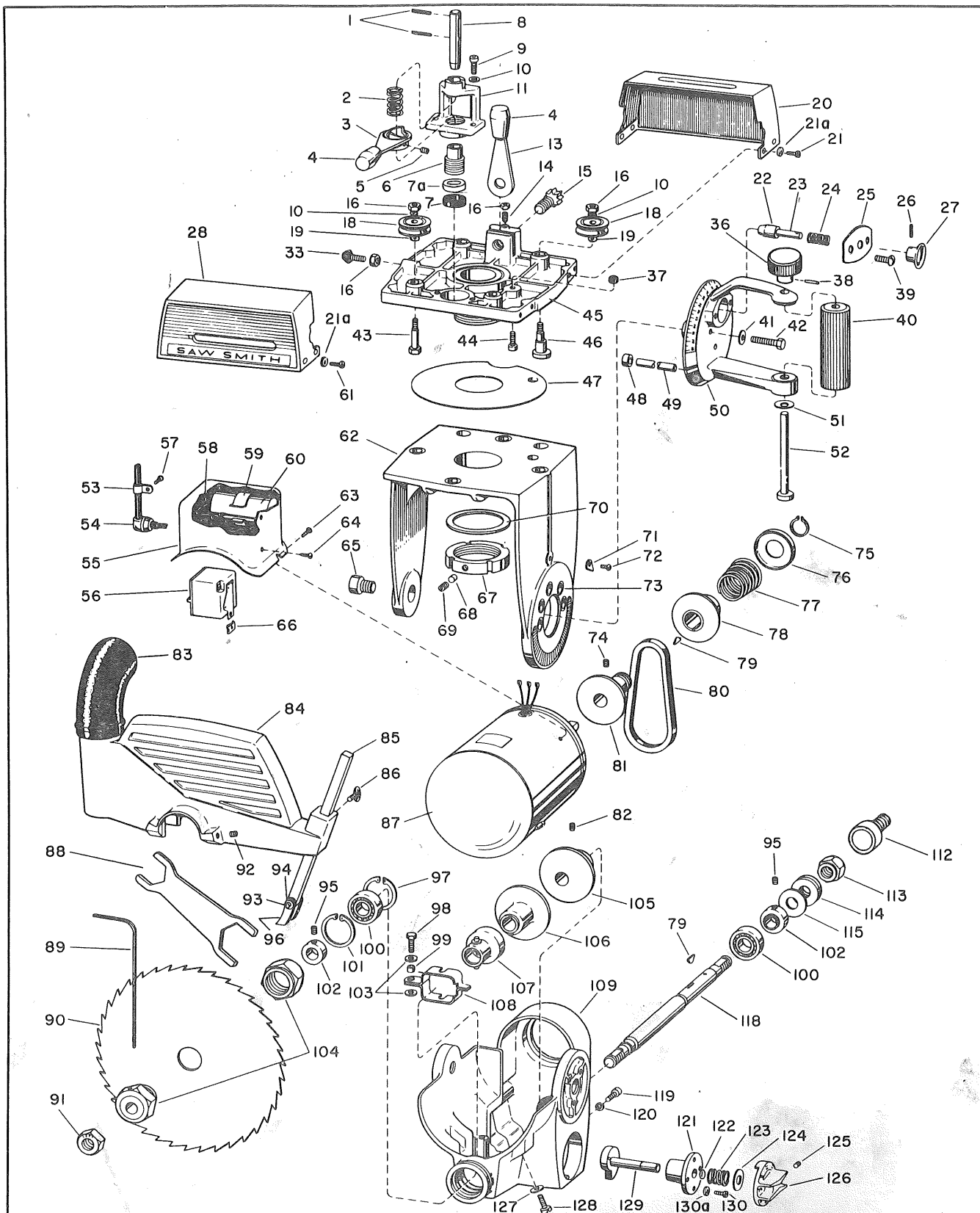
PARTS FOR BASE, COLUMN, ARM AND TABLE



PARTS LIST FOR BASE, COLUMN, ARM AND TABLE

Ref. No.	Part No.	Part Name	Ref. No.	Part No.	Part Name
1	503099	Wire - Main, With Plug	57	426370	Cap Screw, 3/8"-16 x 1" l., Hex Head
2	503166	Cover Plate	58	503152	Shaft - Screw
3	503167	Clips	59	120382	Lock Washer, 3/8" Nom. I.D.
4	161797	Sheet Metal Screw, #6 x 1/2" l., Phillips Head	60	503360	Fence
5	503445	Cap Assembly - Miter	61	503357	Bracket Assembly - Aux. Fence
6	501662	Ring - Adjusting	62	101941	Screw - Wood, #12 x 3/4" l., Flat Head
7	501602	Set Screw, #5-40 x 1/4" l., Cone Point Socket Set	63	503356	Nut - Tee, 5/16"-18
8	503410	Screw - Sem, #8-32 x 3/8" l., Self Tapping - Type D	64	503340	Channel Assembly, R.H.
9	503111	Pointer	65	120393	Washer, 5/16" Nom. I.D.
10	503085	Arm and Track Assembly	66	503413	Machine Screw, 5/16"-18 x 1-1/4" l., Pan Head
11	503310	Lock Assembly - With Key	67	507165	Table
12	503415	Cap Screw, 5/16"-18 x 5/16" l., Socket Head	68	443507	Screw, 1/4"-20 x 1/2" l., Slotted Pan Head
13	163187	Screw, #8x7/8" l., Self Tapping, Type B	68a	120380	Lockwasher 1/4" Nom.
14	503420	Handle Assembly - Arm Lock	69	120392	Washer, 1/4" Nom. I.D.
15	503106	Plug - Hole	70	503351	Handle, R.H.
18	503118	Switch Assembly	71	455734	Pin - Roll, 1/8" x 3/4" l.
19	503088	Glide Rail	72	120214	Lock Washer, 5/16" Nom. I.D.
20	503093	Collar Assembly (w. Setscrew)	73	503353	Channel Assembly, L.H.
21	503091	Pin - Arm Indexing	74	503355	Handle, L.H.
22	273337	Roll Pin, 1/8 x 5/8" l.	75	120376	Hex Nut, 5/16"-18
23	503101	Strain Relief	76	503345	Guide
24	503109	Adjusting Washer	77	124818	Lock Nut, 1/4"-20
25	503181	Pin - Collar	78	121887	Hex Bolt, 1/4"-20 x 3/4" l.
26	222460	Set Screw, 5/16"-18 x 3/8" l., Flat Point	80	503346	Plate
27	501672	Collar Assembly	81	274865	Washer, 5/16" Nom. x 7/8
28	443056	Pin - Drive-Lok, 3/8" x 2" l.	82	503391	Hex Nut - Center Loc, 5/16"-18
29	503107	Pin - Arm Lock	85	503347	Clamp
30	139009	Set Screw, 1/4"-28 x 1/4" l., Cup Point	87	503348	Rod - Lock
31	503092	Spring	88	503134	Rail
32	503410	Screw, #8-32 x 3/8" Sem.	89	503350	Washer, 5/16" Nom x 9/16
33	503100	Clip - Wire	90	455532	Roll Pin, 1/8" x 1/2" l.
34	503164	Clamp	92	503349	Washer - Spring
35	503162	Speed Nut	94	161797	Sheet Metal Screw, #6 x 1/2" l., Phill. Head
36	503163	Shield	95	503157	Crank Assembly - Hand
38	503097	Rod - Lock	96	454512	Pin - Roll, 3/16" x 3/4" l.
39	443044	Pin - Drive-Lok, 5/16" x 1" l.	98	503132	Logo Plate
40	503098	Wire - Coiled	99	503135	Grommet
41	503089	Plate Assembly - Lever	100	503084	Shaft - Riser
44	503096	Pin - Pivot	101	503417	Base Weldment
45	503095	Spacer	102	503389	Groove Pin, 1/8" x 1" l.
46	503390	Hex Nut, 5/16"-18, Gripco Jam	104	503155	Shaft - Stub
47	222484	Set Screw, 5/16"-24 x 3/8", Flat Point	105	100121	Hex Bolt, 5/16"-18 x 3/4" l.
48	503182	Plug - Nylon	107	502818	Upper Thrust Race
49	503108	Set Screw, Nylok 1/4"-28 x 7/16" l.	108	502819	Thrust Bearing
50	503309	Cap	109	503133	Cam Lift
51	503140	Column	112	502820	Lower Thrust Race
52	503151	Set Screw, Nylok 5/16"-18 x 7/16" l.	113	503142	Bracket Assembly - Gear (Includes Ref. Nos. 114 and 117)
53	120373	Nut, 5/16-18 Sq.	114	503144	Bushing
54	503147	Tube Assembly	115	453676	Pin - Roll, 1/8" x 1" l.
55	122077	Bolt, 5/16-18 x 2-1/2" l.	116	503153	Gear - Bevel
56	503418	Base - Column	117	503145	Bushing
			119	503154	Coupling

PARTS FOR MOTOR-CARRIAGE ASSEMBLY



PARTS LIST FOR MOTOR-CARRIAGE ASSEMBLY

Ref. No.	Part No.	Part Name	Ref. No.	Part No.	Part Name
1	453676	Pin - Roll, 1/8" x 1" l.	67	503207	Nut - Pivot
2	503195	Spring	68	503182	Plug - Nylon
3	503189	Handle Weldment	69	115321	Set Screw, 5/16"-18 x 5/16" l., Cup Point
4	503325	Knob - Plastic	70	503206	Washer
5	426094	Set Screw, #10-24 x 1/4" l., Cup Point, Hex Socket	71	503111	Pointer
6	503193	Screw - Clamp	72	503410	Screw - Sem, #8-32 x 3/8" l., Self Tapping - Type D
7	501666	Ring - Friction	73	503205	Insert
7a	501665	Heavy Washer	74	139042	Set Screw, 5/16"-24 x 1/4" l., Cup Point
8	503194	Pin - Yoke Lock	75	503256	Ring - Retaining
9	217907	Cap Screw, 5/16"-18 x 5/8" l., Socket Hd.	76	503255	Retainer - Spring
10	120214	Lock Washer, 5/16" Nom. I.D.	77	503254	Spring
11	503192	Mount - Lock	78	503243	Sheave Assembly - Spring
13	503199	Handle - Carriage Lock	79	501646	Key - Hi-Pro
14	139373	Set Screw, 5/16"-18 x 5/8" l., Cone Point	80	503257	Belt Drive
15	503200	Screw - Jam, 1/2"-13 L.H. Thd.	81	503242	Sheave, Friction
16	124824	Hex Nut, 5/16"-18, Jam Lock	82	102581	Set Screw, 5/16-18 x 3/8"
18	506272	Glide Bearing	83	503300	Discharge Tube
19	502818	Washer - Thrust	84	503428	Guard
20	503279	Cover Assembly, R.H.	85	503302	Rod - Anti-Kickback
21	503411	Screw - Sem, #10-24 x 1/2" l., Self Tapping - Type D	86	503298	Thumb Screw, 1/4"-20 x 1/2" l.
21a	501654	Washer, #10 Nom.	87	503239	Motor, 1-1/8 H.P., A.O. Smith
22	503266	Pin - Locating	88	503240	Motor, 1-1/8 H.P., G.E.
23	503268	Shaft - Locating	89	501425	Wrench - Arbor
24	503265	Spring	90	501459	Wrench - Allen, 5/32"
25	503264	Plate - Retaining	91	501427	Blade - Saw
26	455105	Roll Pin, 3/32" x 1/2" l.	92	503306	Nut - Spindle, L.H.
27	503267	Knob	93	501647	Set Screw, 5/16"-18 x 5/8" l., Cone Point Socket Set
28	503322	Cover Assembly, L.H.	94	503303	Pin
33	503201	Stop - Rubber, Threaded Shank	95	501655	Retaining Ring
36	503274	Knob - Locking	96	102569	Set Screw - 1/4-20 x 1/4" l., Cup Point
37	503278	Cap - Bumper	97	503304	Pawl
38	455734	Pin - Roll, 1/8" x 3/4" l.	98	503227	Snap Ring
39	9417636	Screw, #10-24 x 3/8 Truss Hd.	99	121887	Hex Bolt, 1/4"-20 x 3/4" l.
40	503272	Handle	100	503231	Spacer
41	115548	Lock Washer, 5/16" Nom. I.D.	101	503223	Bearing
42	180084	Cap Screw, 5/16"-18 x 1-5/8" l., Hex Head	102	503226	Snap Ring, Beveled
43	503197	Bolt - Special	103	503224	Collar Assembly (w. Setscrew)
44	186923	Cap Screw, 1/4"-20 x 5/8" l., Socket Head	104	120392	Washer, 1/4" Nom. I.D.
45	503185	Carriage Assembly	105	502157	1-1/4" Arbor - Saw
46	503198	Eccentric	106	503237	Pulley - Fixed Half
47	503202	Shim	107	503236	Pulley - Movable Half
48	503276	Plug - Cradle	108	503232	Bearing and Cup Assembly
49	503275	Pin - Cradle Lock	109	503228	Yoke Assembly - Shaft
50	503260	Handle Assembly - Cradle Control	112	503212	Cradle and Cover Assembly (Incl. Ref. Nos. 119, 120)
51	506948	Washer - Spring	113	503258	Cap
52	503269	Cam Shaft Assembly	114	503305	Nut - Spindle, R.H.
53	503100	Clip - Wire	115	501451	Washer - Spindle (Recessed)
54	503329	Bushing - Strain Relief	116	504553	Washer - Spindle (Plain)
55	503427	Box	118	503222	Shaft - Spindle
56	503331	Relay	119	117285	Cap Screw, 1/4"-20 x 2-1/4" l., Phill. Hd. Slotted
57	125978	Screw, #8 x 1/2 Rd. Hd. Self Tapping - Type A	120	503414	Lock Washer, 1/4" Nom. I.D., Hi-Collar
58	503333	Connection	121	503215	Locator - Speed
59	503330	Clip - Capacitor	122	502325	Retaining Ring
60	503334	Capacitor	123	503216	Spring
62	503203	Yoke Casting Assembly (Incl. Ref. 73)	124	120394	Washer, 3/8" Nom. I.D.
63	193238	Screw, #10 x 5/16" l., Pan Hd., Self Tapping - Type B	125	140870	Set Screw, #10-24 x 3/8" l.
64	125987	Screw, #8 x 1/2" l., Rd. Hd., Self Tapping - Type A	126	503220	Dial Assembly (w. Setscrew)
65	503277	Cap Screw, 1/2"-13 x 1/2" l., Socket Head Special	127	120392	Washer, 1/4" Nom. I.D.
66	503332	Speed Nut - #8 Tinnerman	128	503412	Screw, 1/4"-20 x 5/8" l., Pan Hd. Slotted
			129	503217	Shaft Assembly - Cam
			130	449825	Machine Screw, #10-24 x 5/8" l.
			130a	120391	Washer, #10 Nom. Size



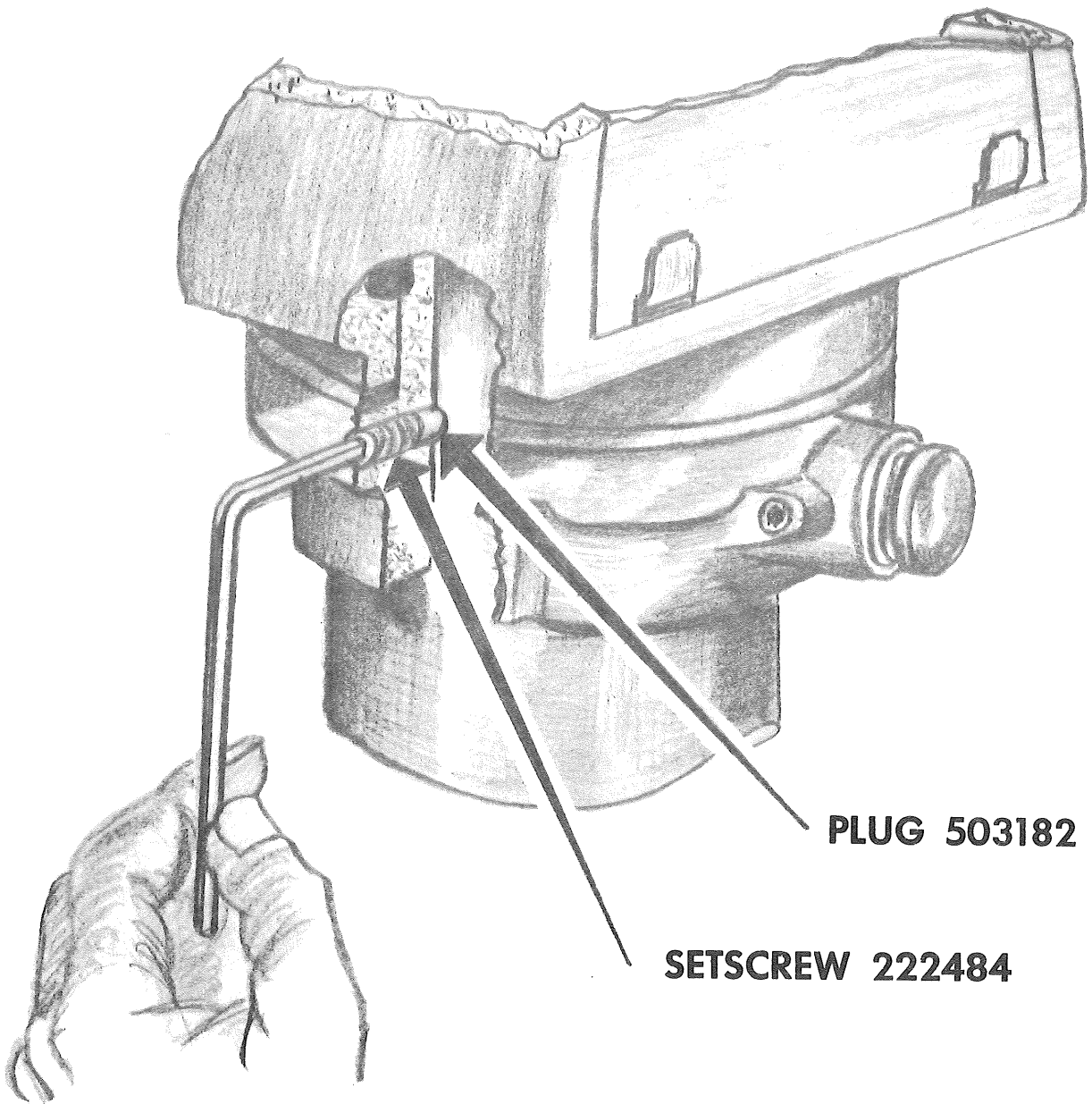
IMPORTANT INFORMATION ON SANDING DISC CEMENT

There are several types of cement used for fastening paper discs to the metal sanding disc. One widely known type is a form of stick shellac. While this type has been in use for many years, it is difficult to apply. After much research, Magna perfected an entirely new type of liquid adhesive, specifically designed for fastening paper or cloth-backed abrasive discs to disc sanders. This new Magna liquid adhesive is, by far, the simplest to use and the safest disc sander adhesive ever developed.

We sincerely wish we could have included a sample of our liquid adhesive with your new SHOPSMITH or SAWSMITH — but this adhesive in liquid form cannot be stored in temperatures under 32°. Since MAGNA products are, of necessity, shipped in trucks and unheated freight cars, this would render your sample utterly useless.

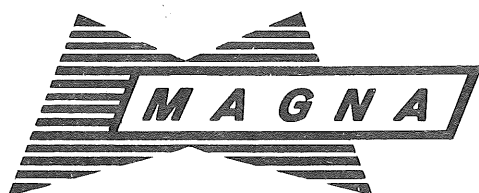
Naturally we ship liquid adhesive to your dealer during the warm months of the year and it is kept in his heated store. We hope you will try it the very first chance you get.

SUPPLEMENTARY OPERATING INSTRUCTIONS



LOCKING THE ARM ELEVATION

For dadoing, shaping, or molding operations, it is desirable to keep the tool at a constant elevation to insure uniform cuts. When the desirable elevation is obtained, locking is done by tightening the setscrew in the side of the collar, which forces the locking plug against the column. Loosen setscrew before changing elevation. Setscrew may be left for most other operations.



AMERICAN CORPORATION
CINCINNATI, OHIO, U. S. A.

T.M. Reg. U.S. Pat. Off.
Bulletin No. 503316 11/64

Copyright 1959

