



MARK V 520 UPGRADE PKG (Old style tubes) 555983

Tools Needed

- ◆ 9/32 Drill Bit in a hand drill
- ◆ 5/32 Allen Wrench
- ◆ Alignment Gauge (supplied)

SAFETY

WARNING

Before performing the conversion of your saw table to the Pro Fence 520 saw table and fence system, do the following:

- Read and understand, and follow ALL the Assembly & Alignment procedures enclosed herein.

CONVERSION INSTRUCTIONS

1. Remove your main saw table, extension table, and floating tables from your Mark V Model 510, turn the tables upside down on a flat smooth surface. Using a T-27 Torx driver to remove the torx drive screws (514540) from the mounting studs of the table tubes (514338). Remove the tubes, spacers (514101) and jack screws (514440) from all of your tables.
2. Using a 9/32" diameter drill bit in a hand drill, drill out the threaded tube mounting holes in both ends of the three extension tables and the two outside tube mounting holes in both ends of the main saw table.

NOTE

DO NOT drill out the center tube mounting holes in either end of the main saw table.

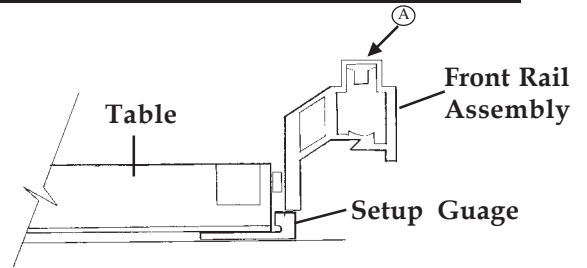


Figure A-1

3. With your table upside down on a flat smooth surface, slide the setup gauge (25) under the front edge of the saw table near the table's center, the thick part should stick out from under the front and up toward the underside of the table (See Figure A-1).
4. Slide a lock washer (115546) over the button head screw (516027). Insert the screw and washer through the counter bored hole in the front extrusion (521601) of the main saw table, sliding it through the spacer (24) and into the tube mounting hole. Using a 5/32" Allen wrench finger tighten this machine screw.
5. Insert the flat head screws (23) through the front rail assembly (17) from the front, slide the spacer (24) on the screw and slide the screws through the tube mounting holes in the table.

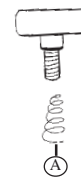


Figure A-2

6. Place the flat washer (120392) on the screw and then the keps nut (515294). Finger tighten only. Make sure the setup gauge (25) is flat against the surface of your table and against the front rail assembly and tighten nuts securely. Then tighten the center screws securely.

5. Slide the small diameter end of the spring (22) over the knob (21) (See Figure A-2). Thread the knob with the spring into the threaded inserts near each end of the rail assembly (Marked A in Figure A-1).
6. Repeat steps 2, 3, 4, and 5 for the rear rail assembly (19) on the main saw table.
7. Repeat steps 2 through 6 for your extension table and floating tables. Then mount the tables back on your MarkV.

ALIGN THE PRO FENCE PARALLEL WITH THE WORKTABLE

8. Place the miter gauge in the left slot of the worktable on the infeed side. Place the Pro Fence on the right side of the saw table.
9. Insert the long 5/32" Allen wrench through the miter gauge and secure it using the short 5/32" Allen wrench and a set screw borrowed from the tool rest.
10. Move the fence toward the Allen wrench until it just touches it.
11. Lock the lower fence lock handle first, then lock the upper fence lock handle to secure both ends of the pro fence.
12. Slide the miter gauge back and forth in the slot. The tip of the Allen wrench should keep in slight contact with the fence. Watch that you don't scratch the fence.
13. If the allen wrench pulls away from or binds against the fence, the fence needs aligning. If so, do the following:
 - a. Using the short 5/32" short Allen wrench, loosen the four button head cap screws (3), located on the top of the fence, slightly. They should be just tight enough to require firm pressure to align the fence.
 - b. Raise the upper fence lock handle only to unlock the rear of the fence.

- c. Adjust the rear end of the fence so that it just touches the allen wrench as the miter gauge slides along the fence.
- d. When alignment is reached, lock the upper fence lock handle. Slide the miter gauge back and forth to double check your alignment. Using the short 5/32" Allen wrench, tighten the four button head cap screws (3) completely.

ASSEMBLE THE FENCE STRADDLER

15. See the exploded view on Page 3. Unscrew the fence straddler's knob (32) and remove the washer (34), machine screw (33), and slide rail (31) from the fence straddle block (30).
16. Transfer the slide rail (31) to the other side of straddle block and reassemble with the screw, washer and knob, as shown in Figures A-4 and A-5.

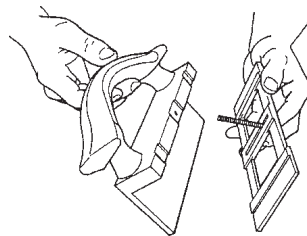


Figure A-4

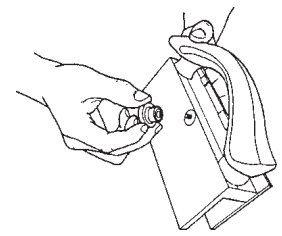


Figure A-5

USING THE FENCE STRADDLER

14. Use the fence straddler to hold down and push stock narrower than 1-1/2" past a saw blade or cutter. The straddle block (30) sits over the fence, while the bottom edge of the slide rail (31) holds down on the stock. To change the height of the slide rail (31), loosen the knob (32). To reverse the slide rail (31) loosen the knob (32) and rotate the slide rail (31) 180°. Adjust the bottom edge of the slide rail (31) firmly on the stock (See Figure A-3). Then tighten the knob (32).

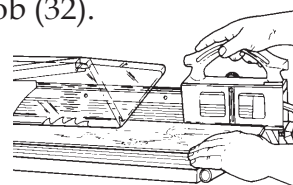
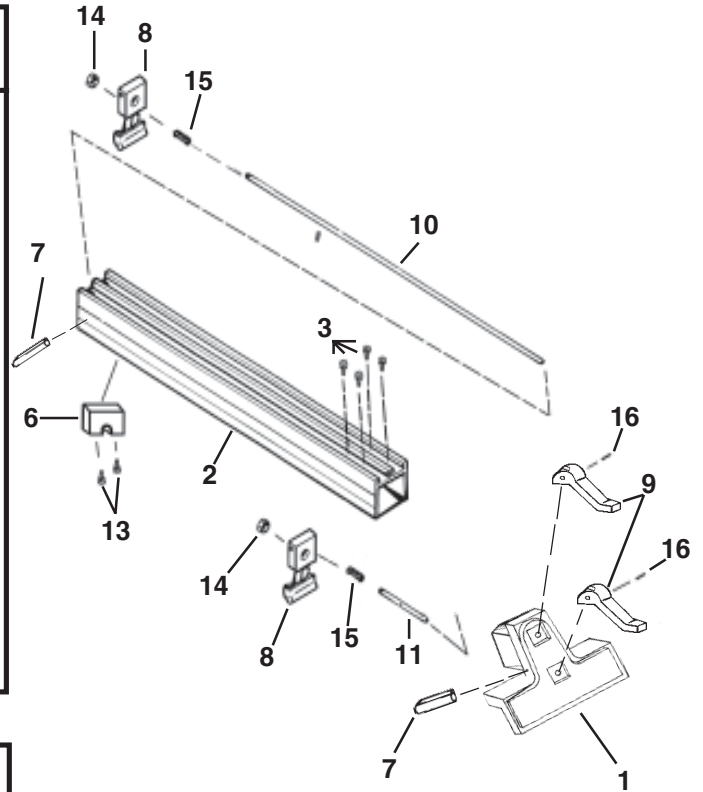


Figure A-3

PRO FENCE

Ref. No.	Part No.	Item Description	Qty.
—	518418	Pro Fence Assembly (Incl. 1-17)	
1	518419	. Fence Base	1
2	518400	. Fence Extrusion	1
3	517829	. Screw 1/4-20x1/2 Button Hd	4
4	518404	. Front Pad (not shown)	4
5	514317	. Plate-wear (not shown)	2
6	518420	. Spring Block	1
7	518405	. Locking Bar Rod	2
8	518407	. Locking Bar	2
9	521578	. Locking Handle	2
10	518410	. Rod-Long	1
11	518409	. Rod-Short	1
12	518423	. Rear Pad (not shown)	1
13	518461	. Screw #10-24 Flat Hd	2
14	518459	. Lock Nut	2
15	518416	. Spring	2
16	514527	. Rollpin	2



SAW TABLE CONVERSION KIT

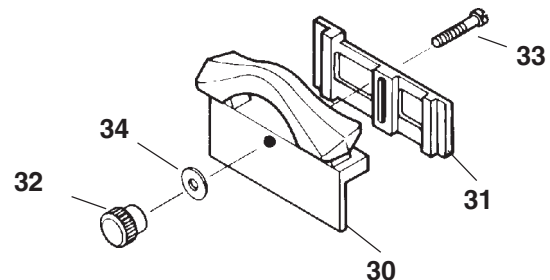
Ref. No.	Part No.	Item Description	Qty.
17	521601	Front Rail Asm. - Main Table	1
18	518489	Front Rail Asm. - Ext Tables	3
19	521602	Rear Rail Asm. - Main Table	1
20	518491	Rear Rail Asm. - Ext Tables	3
21	515859	Knob w/stud	10
22	518462	Spring	10
23	518460	Flat Head Screw	16
24	518403	Table Spacers	18
25	521097	Alignment Guage	1
26	516027	Button Head Screw	2
27	115546	Lock Washer	2
28	120392	Washer	16
29	515294	Keeps nuts	16

Front Rail Assembly (Side view)

Rear Rail Assembly (Side view)

FENCE STRADDLER

Ref. No.	Part No.	Item Description	Qty.
—	521107	Fence Straddler Assembly (incl. 30-34)	
30	521106	. . Straddle Block	1
31	513706	. . Slide Rail	1
32	513713	. . Knob	1
33	521418	. . Machine Screw	1
34	513864	. . Washer	1



Serving Your Needs

Your Shopsmith equipment is covered by the **Shopsmith Gold Medal Buyer Protection Plan**. This plan includes a full one-year warranty, and a lifetime reconditioning program.

Full One-Year Warranty

Your equipment is guaranteed against all defects in parts and workmanship for **ONE FULL YEAR** from the date of receipt. Here are the details:

- Shopsmith warrants to the owner of Shopsmith woodworking equipment that the equipment will be free of manufacturing defects in materials and workmanship for a period of one year from the date of receipt. All claims must be submitted in writing within one month after expiration of the one-year warranty period. Shopsmith shall, by repair of, or at its option replacement, remedy any defect or malfunction covered by this warranty. This warranty excludes and does not cover defects, malfunctions, or failures of your Shopsmith equipment which are caused by damage while in your possession or that of a previous owner to provide reasonable and necessary maintenance.
- Personal injury or property damage may result if equipment is interchanged with non-Shopsmith brand equipment. Therefore, Shopsmith, Inc. disclaims all liability and excludes all warranties of merchantability and fitness for a particular purpose if this equipment is used with a non-Shopsmith brand unit.
- **THIS WARRANTY IS IN LIEU OF ALL OTHER EXPRESS WARRANTIES. IN NO EVENT SHALL SHOPSMITH BE LI-**

ABLE FOR ANY CONSEQUENTIAL OR INCIDENTAL DAMAGES. Some states do not allow the exclusion or limitation of consequential or incidental damages, so the above limitation may not apply to you. This warranty gives you specific legal rights, and you may also have other rights which vary from state to state.

Lifetime Reconditioning Program

Our equipment is designed for years of constant, rugged, uninterrupted operation. However, to insure the continued usefulness of your unit, we offer a unique Lifetime Reconditioning Program.

At any time, regardless of the age of your equipment, you can send it to us (round trip shipping at owner's expense), and we'll rebuild it and touch up the paint. We'll replace wearing parts such as bearings, seals, and belts. Your reconditioned equipment will come back to you with a new 90-day full warranty. Reconditioning or repair will be done for a cost that will not exceed one-third of the current list price of the equipment at the time of repair. If parts other than normal wearing parts need replacement, an estimate will be submitted to the owner for approval.

Warranted Service

To repair or replace a part in the equipment while it's still under warranty, call Customer Services.

Depending on the part you need or the type of repair, you may be able to replace or repair it yourself. If you are unable to do the repair yourself, Customer Services will instruct you where to send the part or your equipment. If the warranty is applicable, the part will be repaired at no charge.

Out-of-Warranty Service

If your equipment is out of warranty and needs service, call Customer Services for instructions on how you can have the part repaired at our Factory or Store for a fee. Customer Services will help you diagnose the problem, give you an estimate of the cost, and instruct you where to send the part or equipment for repair.

How to Order Parts

To order replacement parts, first consult the Parts List. Then write or call for current price information.

How to Return Parts

Should you need to return the equipment, call Customer Services for packing and shipping information.

Customer Services

Where to Write - Send inquiries to:

Shopsmith, Inc.
Customer Services
6530 Poe Avenue
Dayton, Ohio 45414

Where to Phone: Shopsmith maintains toll-free telephone numbers during normal business hours.

For service call:

1-800-762-7555 (Continental U.S., Hawaii, Alaska, Puerto Rico and U.S. Virgin Islands)

To place an order call:

1-800-543-7586 (Continental U.S., Hawaii, Alaska, Puerto Rico and U.S. Virgin Islands)

When you write or call, tell us your Customer Number . (Your customer number appears on the invoice.) Please write the number in the space provided here.

Customer No. _____